

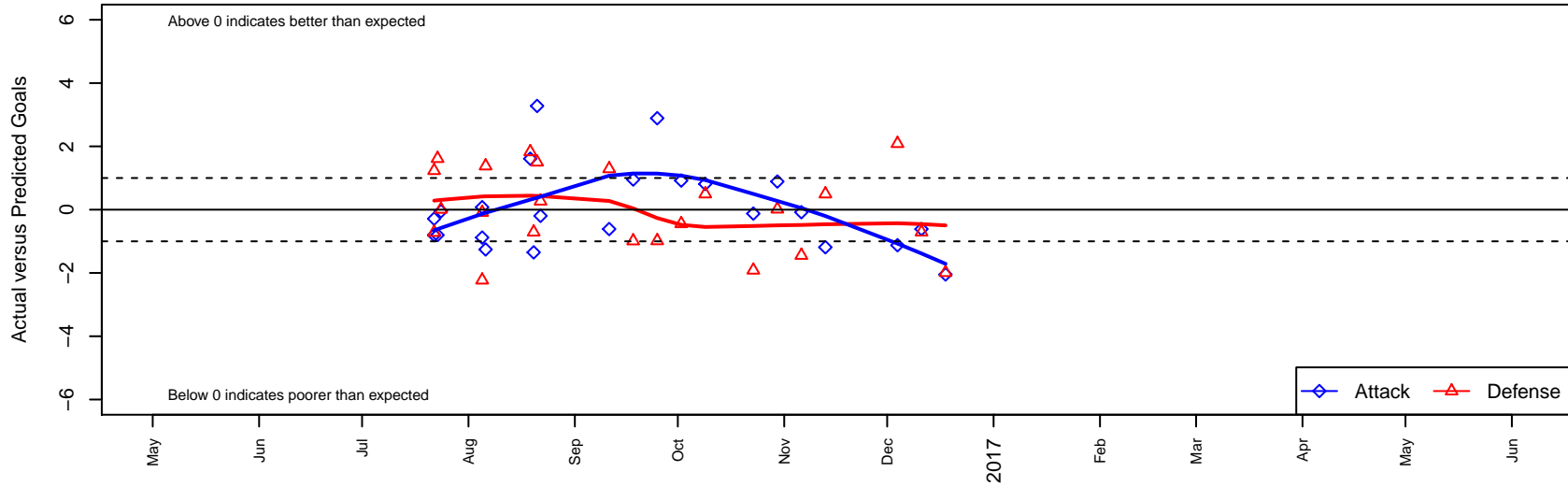
PSA Force Black B98

Pilchuck Soccer Alliance
 Marysville, WA
 B98 total strength=1332
 attack=9.4 defense=4.26
 fall league = NPSL Div 2 (98) U19
 notes= Doll 2015-6

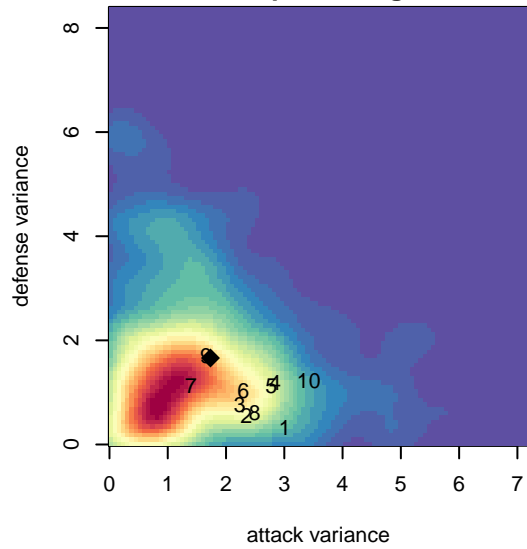
alt names used:
 PILCHUCK SOCCER ALLIANCE – FORCE DC
 PSA B98 Force– Doll
 PSA B98 Force_Doll
 PILCHUCK SOCCER ALLIANCE – FORCE B9

Venues played:
 2016 Crossfire Select U19 Silver
 2016 WA Rush Cup B98/99 Silver U19
 2016 Bigfoot BU18/19 U19
 2016 NPSL Division 2 (98) U19

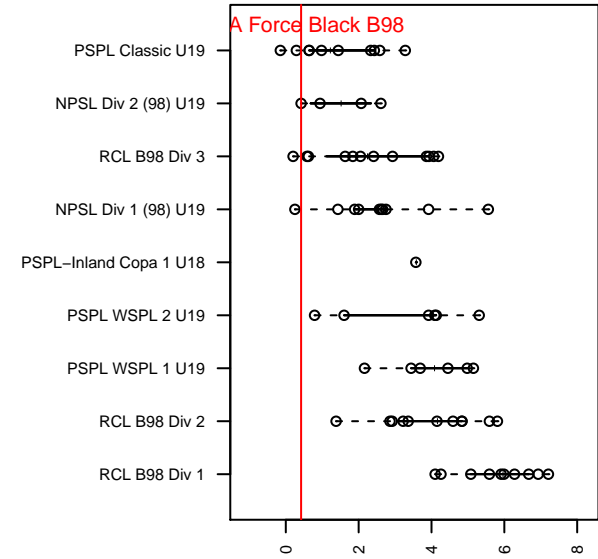
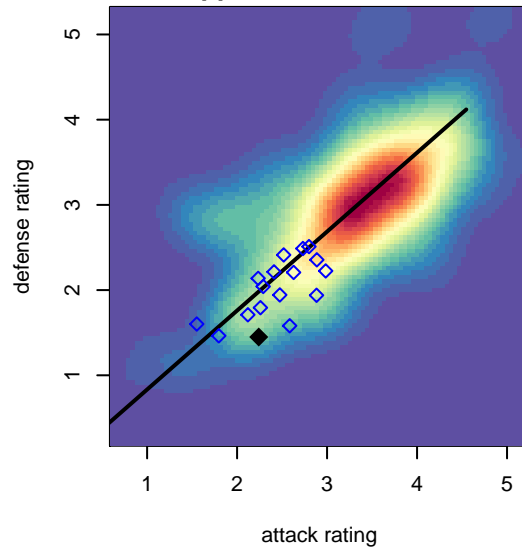
PSA Force Black B98
 Dots are actual minus expected GF (blue circles) and GA (red triangles).
 Blue line is smoothed change in attack strength. Red is smoothed change in defense strength.



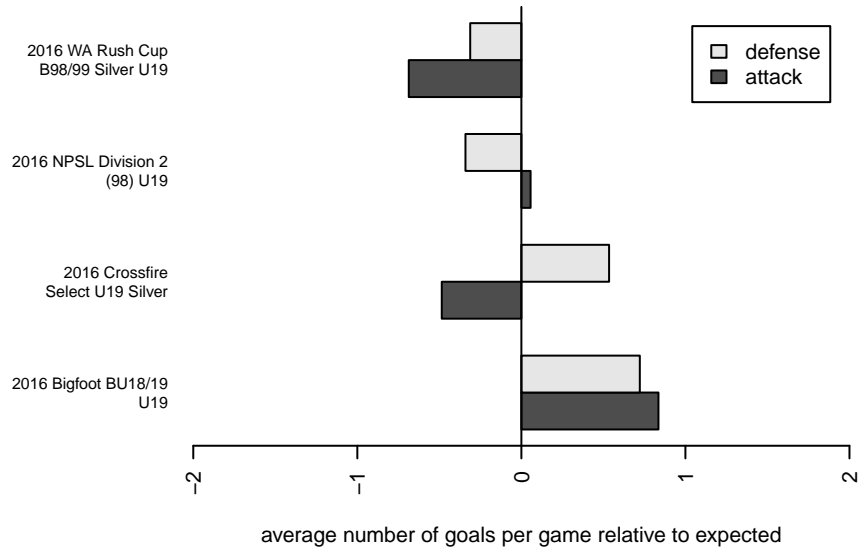
**attack and defense variance (black dot)
relative to other teams
and top 10 in region**



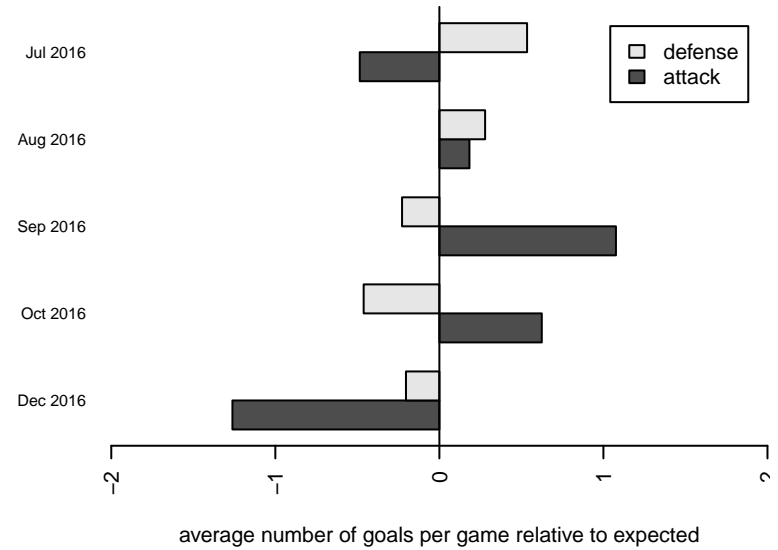
**attack and defense rating
relative to others at age
and all opponents in last 13 months**



Performance relative to 13 month average



Performance relative to 13 month average



| date | home | | away | | venue | pred.home | pred.away |
|-------------|-----------------------------------|---|--------------------------------|---|------------------------------------|------------------|------------------|
| 2016-12-18 | NSC Edge Green B99 | 3 | PSA Force Black B98 | 0 | 2016 NPSL Division 2 (98) U19 | 1.01 | 2.05 |
| 2016-12-11 | Kent United White B98 | 3 | PSA Force Black B98 | 1 | 2016 NPSL Division 2 (98) U19 | 2.29 | 1.61 |
| 2016-12-04 | PSA Force Black B98 | 0 | South Whidbey Wild B98 | 1 | 2016 NPSL Division 2 (98) U19 | 1.12 | 3.09 |
| 2016-11-13 | Mukilteo Rush Irish Lions B99 | 2 | PSA Force Black B98 | 0 | 2016 NPSL Division 2 (98) U19 | 2.50 | 1.19 |
| 2016-11-06 | PSA Force Black B98 | 1 | Mercer Island FC Whitecaps B98 | 6 | 2016 NPSL Division 2 (98) U19 | 1.08 | 4.56 |
| 2016-10-30 | PSA Force Black B98 | 3 | Storm King B99 | 3 | 2016 NPSL Division 2 (98) U19 | 2.11 | 3.02 |
| 2016-10-23 | South Whidbey Wild B98 | 5 | PSA Force Black B98 | 1 | 2016 NPSL Division 2 (98) U19 | 3.09 | 1.12 |
| 2016-10-09 | PSA Force Black B98 | 2 | Mukilteo Rush Irish Lions B99 | 2 | 2016 NPSL Division 2 (98) U19 | 1.19 | 2.50 |
| 2016-10-02 | Mercer Island FC Whitecaps B98 | 5 | PSA Force Black B98 | 2 | 2016 NPSL Division 2 (98) U19 | 4.56 | 1.08 |
| 2016-09-25 | Storm King B99 | 4 | PSA Force Black B98 | 5 | 2016 NPSL Division 2 (98) U19 | 3.02 | 2.11 |
| 2016-09-18 | PSA Force Black B98 | 3 | NSC Edge Green B99 | 2 | 2016 NPSL Division 2 (98) U19 | 2.05 | 1.01 |
| 2016-09-11 | PSA Force Black B98 | 1 | Kent United White B98 | 1 | 2016 NPSL Division 2 (98) U19 | 1.61 | 2.29 |
| 2016-08-22 | Blackhills FC Black B99 | 1 | PSA Force Black B98 | 2 | 2016 Bigfoot BU18/19 U19 | 1.27 | 2.20 |
| 2016-08-21 | PSA Force Black B98 | 5 | Snohomish United Red B98 | 0 | 2016 Bigfoot BU18/19 U19 | 1.72 | 1.50 |
| 2016-08-20 | PSA Force Black B98 | 0 | PacNW White B99 | 3 | 2016 Bigfoot BU18/19 U19 | 1.35 | 2.29 |
| 2016-08-19 | PSA Force Black B98 | 3 | Pacific FC Revolution B99 | 1 | 2016 Bigfoot BU18/19 U19 | 1.39 | 2.83 |
| 2016-08-06 | NW United Black B98 | 3 | PSA Force Black B98 | 0 | 2016 WA Rush Cup B98/99 Silver U19 | 4.38 | 1.26 |
| 2016-08-05 | Dragons FC B99 | 5 | PSA Force Black B98 | 0 | 2016 WA Rush Cup B98/99 Silver U19 | 2.77 | 0.88 |
| 2016-08-05 | PSA Force Black B98 | 1 | TBSC Arsenal FC B98 | 4 | 2016 WA Rush Cup B98/99 Silver U19 | 0.92 | 3.91 |
| 2016-07-24 | NSC Edge Green B99 | 1 | PSA Force Black B98 | 2 | 2016 Crossfire Select U19 Silver | 1.01 | 2.05 |
| 2016-07-23 | PSA Force Black B98 | 0 | Lake Hills Flash B98 | 2 | 2016 Crossfire Select U19 Silver | 0.80 | 3.61 |
| 2016-07-22 | PSA Force Black B98 | 1 | NK United B99 | 3 | 2016 Crossfire Select U19 Silver | 1.29 | 2.28 |
| 2016-07-22 | Seattle United Shoreline Blue B98 | 2 | PSA Force Black B98 | 0 | 2016 Crossfire Select U19 Silver | 3.23 | 0.80 |